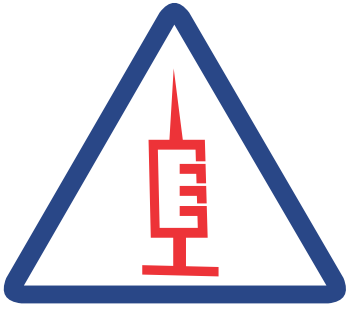


CE
1639



A SYSMECH - MAIS JOINT VENTURE

Mais India

The health care specialist



Healing the World with best Medical Products™



“**Mais India Medical Devices Pvt. Ltd.** is an alliance between the multi-million dollar global leader '**Mais Medical**' and the world-wide leader in medical machine manufacturing '**Sysmech Enterprises**'. The motto of this alliance is to ensure that single use medical products reach the globe at affordable prices but at an unbeatable quality conforming to international standards. The company is one of the leading names in the healthcare sector. We use state-of-the art technology with ultra modern manufacturing facilities to manufacture world-class quality products. Our strength lies in our team of enormously experienced (over 3 decades) engineers and trained technocrats totally committed to continuous innovation and cutting edge research.

We are proud to be affiliated with SGS. We comply to the related National and International Standards like India - Medical Devices Regulation (MDR) 2017 , EN ISO 13485:2016, MDD 93/42/EEC as amended, at every stage of production. We have class 10,000 clean rooms for the product assembly and blister packing & class 1,00,000 clean room for injection moulding. We also have an in-house Analytical laboratory for the in process and finished products testing of our entire range of products. We are among the few companies having **fully automatic vision system** for the final assembly.

Vision

“We seek to ensure that the benefits of best modern technology in healthcare are available to all at an affordable price.”

Mission

“To become a corporation known for its instrumental role in welfare of mankind by producing high quality medical products at lower prices using cutting edge technology and incessant research”

Research & Development

We do intensive in-house research and development for all our products and processes & always keep working on the invention of special production machines and processes to enhance the quality of production and products. Constant improvement in the existing designs by using the latest know-how along with the help of intense investments in trials is used by our intellectual capital in designs and teams of highly capable & experienced staff. We always focus on the addition of value to the existing designs our R&D department.

Products Range

Infusion Therapy

Safety I.V. Cannula
 I.V. Cannula
 Multi lumen Extension Sets With Needle-Free Connector / Injection Stopper
 Three Way Stop Cock Click 45°
 Three Way Stop Cock
 Three Way stop cock with Extension Tube
 Extension Line (High or Low Pressure)
 Needle Free Connector
 I.V. Flow Regulator Extension Set

Anaesthesia & Respiratory Care

Endotracheal Tube (Cuffed)
 Endotracheal Tube (Plain)

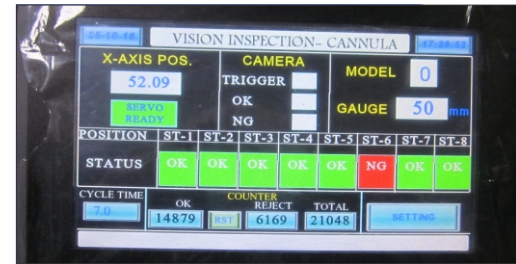
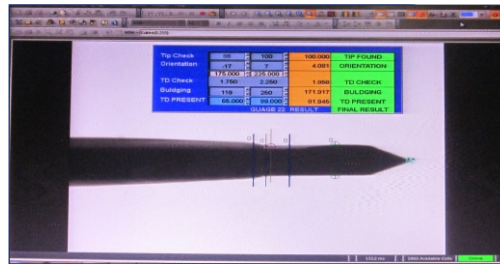
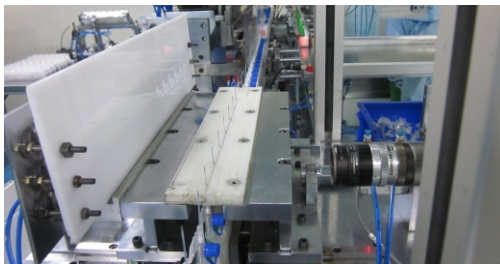
Surgery & Drainage System

Yankauer Suction Set

Urology Nephrology

Foley's Catheter

“Quality is not an act, it is a habit”



Zero Manual Error

Minimal Bio-Burden

Consistent Quality at all Levels

“**Mais India Medical Devices Pvt. Ltd.** is among the few medical disposable companies to have **automatic computerised vision inspection system** set up for entire manufacturing facility. Each finished device is inspected against a master by high resolution cameras. This along with our fully automatic production assembly lines and well equipped state-of-the-art R & D capability gives us the confidence to guarantee an unbeatable quality.”

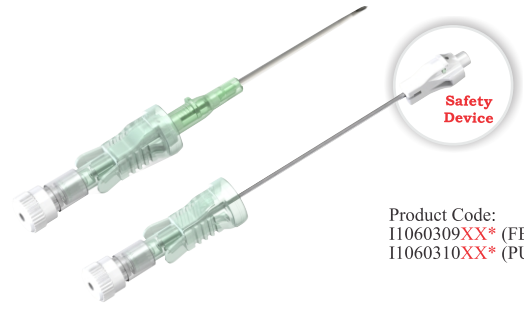
- Needle Orientation
- Needle Tip Damage
- Trim Distance
- Catheter Tipping Quality
- Needle and Catheter Length Variation
- Needle Burr

Technical Specifications

Size	Colour Code	Ext. Dia. mm	Catheter Length mm	Flow Rate ml./min
14G	Orange	2.1	45	300
16G	Grey	1.7	45	200
17G	White	1.5	45	140
18G	Green	1.3	45	95
18G	Green	1.3	32	95
20G	Pink	1.1	32	62
22G	Blue	0.9	25	33
24G	Yellow	0.7	19	20
26G	Violet	0.6	19	15



Product Code:
I1070101XX* (FEP R/O, MGP)
I1070105XX* (PUR R/O, MGP)



Product Code:
I1060309XX* (FEP R/O, MGP)
I1060310XX* (PUR R/O, MGP)

MaisSafe™

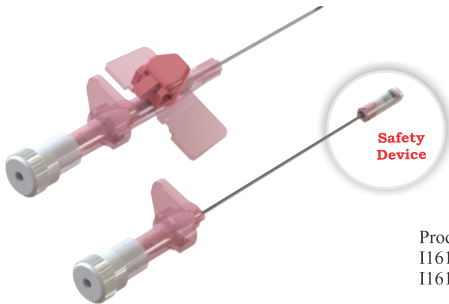
Safety I.V. Cannula with Injection Port & Wings

- Added safety feature for prevention of needle stick injury
- Irreversible activation of safety mechanism
- Colour wings body
- Available in PUR/FEP variants
- Available in MGP packing
- Sizes: 14G to 26G

Maiswin Safe™

Safety I.V. Cannula without Injection Port & Wings

- Added safety feature for prevention of needle stick injury
- Irreversible activation of safety mechanism
- Colour body
- Available in PUR/FEP variants
- Available in MGP packing
- Sizes: 14G to 26G



Product Code :
I1610201XX* (PUR R/O, MGP)
I1610203XX* (FEP R/O, MGP)



Product Code :
I1520201XX* (PUR R/O, MGP)
I1520203XX* (FEP R/O, MGP)

Mais Protect™

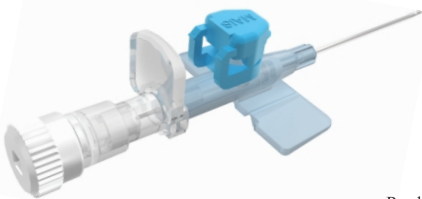
Safety I.V. Cannula with Injection Port & Wings

- Added safety feature for prevention of needle stick injury
- Irreversible activation of safety mechanism
- Colour wings body
- Available in PUR/FEP variants
- Available in MGP packing
- Sizes: 14G to 26G

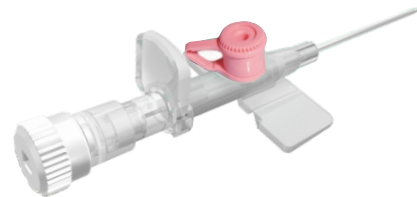
Maiswin Safe Clip™

Safety I.V. Cannula without Injection Port & Wings

- Added safety feature for prevention of needle stick injury
- Irreversible activation of safety mechanism
- Colour body
- Available in PUR/FEP variants
- Available in MGP packing
- Sizes: 14G to 26G



Product Code : I01703XXXX*



Product Code : I01101XXXX*

Maisflon Premium™

I.V. Cannula with Flip Top Injection Port Cap & Color Wings

- Injection port with one way silicon injection valve
- 6% luer taper for compatibility with all standard devices
- Available in PUR/FEP variants
- Available in MGP packing
- Sizes: 14G to 26G

Maisflon™

I.V. Cannula with Injection Port & Wings

- Injection port with one way silicon injection valve
- 6% luer taper for compatibility with all standard devices
- Available in PUR/FEP variants
- Available in MGP packing
- Sizes: 14G to 26G

Infusion Therapy



Product Code : I01613XXXX*



Product Code : I0161428XXX*

Maiswin™

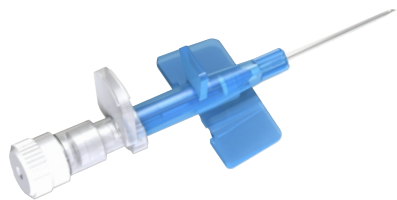
I.V. Cannula without Injection Port & Wings

- Colour body
- Main body specially designed with projection for low point gap to facilitate better maneuvering
- Available in PUR/FEP variants
- Available in MGP packing
- Sizes : 14G to 26G

Maispen™

I.V. Cannula without Injection Port & Wings (Pen Type)

- Colour body & Cap
- Main body specially designed with projection for low point gap to facilitate better maneuvering
- Available in PUR/FEP variants
- Available in MGP packing
- Sizes : 14G to 26G



Product Code : I01206XXXX*



Product Code : I01505XXXX*

Maiscan™

I.V. Cannula without Injection Port & With Wings

- Colour wing body
- Main body specially designed with projection for low point gap to facilitate better maneuvering
- Available in PUR/FEP variants
- Available in MGP packing
- Sizes : 14G to 26G

Maiscath™

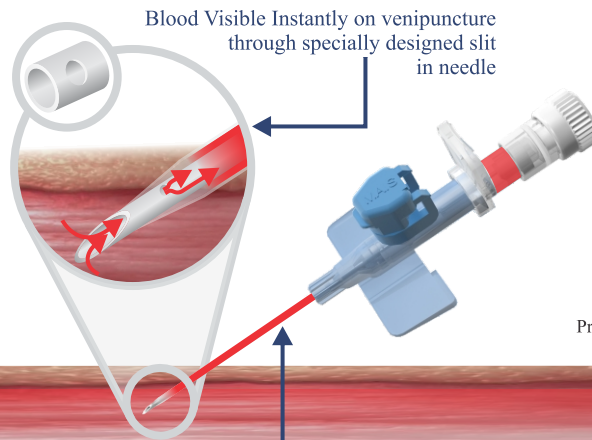
I.V. Cannula with Integrated Three Way Stop Cock

- Colour wing body
- 360° rotation of the tap without limitation
- Available in PUR/FEP variants
- Sizes: 14G to 26G

Maisflex™

I.V. Cannula with Injection Port & Wings (Instant Flashback)

- Instant conformation of successful venipuncture
- Quick visualization blood flow along catheter body, enhance clinician's ability to successfully access the vein
- Flip top cap injection port with one way silicon injection valve
- 6% luer taper for compatibility with all standard devices
- Available in PUR/FEP variants
- Available in MGP packing
- Sizes: 14G to 26G

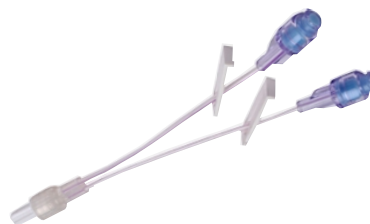


Product Code : I01304XXXX*

Extension Sets

Multi lumen Extension Sets With Needle Free Connector / Injection Stopper

- Male luer connector at one end and female Needle free connector / Injection stopper other end.
- High quality kink resistant tube that provides smooth flow.
- Smooth internal surface to minimize variation of flow.
- Slide clamp for immediately stop the flow.
- Available : Single lumen, Double lumen, Triple lumen
- Length of tubes : 10-30cm



Latex Free

Product Code :
I123000200 (Single lumen)
I123000201 (Double lumen)
I123000202 (Triple lumen)



*XX= 01-Blue
02-Red
03-White

Product Code :
I0281101XX*
I0281201XX* (Lipid Resistant)

Maisway Click™

Three Way Stop Cock Click 45°

- Can Sustain Pressure up to 4.5 bar (65 psi)
- Smooth movement
- Minimum priming volume for accurate drug administration
- Highly transparent (free from blue tinge)
- Rotating male luer and two female luer connectors
- Arrow indication on the handle to indicate the direction of flow
- Connection meets 6% taper to ensure leakage free fitment



*XX= 01-Blue
02-Red
03-White

Product Code :
I0210101XX*
I0220101XX* (Lipid Resistant)

Maisway™

Three Way Stop Cock

- Pressure handling capability : up to 10 bar
- Universal 6% taper to make it compatible with wide range of other medical equipment.
- Arrow indication mark on handle to indicate the direction of flow.
- Design with minimum priming volume to ensure correct drug administration.
- Available in Lipid Resistant / Non Lipid resistant.
- Available : Blue, Red & White

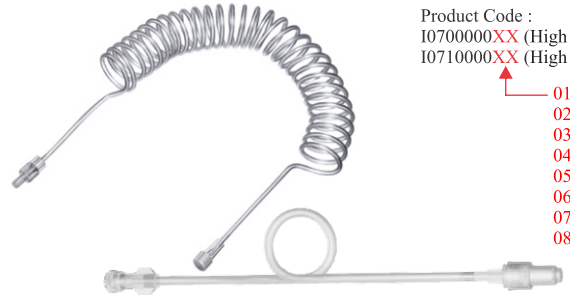


Product Code :
I0310101XX

Maisway Extn.™

Three Way Stop Cock with Extension Tube

- Three Way Stop Cock at one end & male luer lock at the other end of extension tube.
- High quality kink resistant tube that provides smooth flow. Universal 6% taper to make it compatible with wide range of other medical equipment.
- Arrow symbols to indicate the direction of flow.
- Minimum priming volume required for correct drug administration.
- The integrated 3-Way stop cock offers multiple infusion line.
- Tube length available (cm): 10, 25, 50, 80, 100, 150, 200



Product Code :
I0700000XX (High Pressure)
I0710000XX (High Pressure-S)

01-10cm
02-25cm
03-50cm
04-100cm
05-150cm
06-200cm
07-300cm
08-400cm

High Pressure Extension Line

Extension Line Low or High Pressure (Plain & Spiral)

- Transparent Extension Line (with colour coded stickers)
- 6% male & female luer locks.
- Kink resistant PVC tubing.
- Tube dia : Int : (1.0mm) Ext.(3.0mm) & pressure handling capacity : 800 psi
- Smooth internal surface to minimize variation of flow.
- Sizes (Plain) :25,50,100,150,200 cm
- Sizes (Spiral) :100,150,200,300,400 cm



DEHP Free

Latex Free

Product Code :
I112000201



Latex Free

Product Code : I090010000

Needle Free Connector

Needle Free Connector / Needle Free Injection Stopper

- The housing is impregnated with PC which helps to lower infection.
- Smooth top can be effectively swabbed with standard, acceptable disinfection practice
- Straight-through fluid path helps improve the ability to flush
- Zero dead space helps prevent issues caused by blood clotting, difficulty in flushing fluid pathway or interactions with incompatible drugs
- Split septum valve technology

Maisflow™

I.V. Flow Regulator Extension Set

- Precise flow rate control of IV fluids with range of 5 to 250 ml/hr
- With "Y" injection port (latex or) for intermittent medication
- Also available with thumb support "Y" injection port and Needle free "Y"-Site
- Soft & kink resistant PVC tubing
- Male luer connector at one end and female luer connector at other end
- Standard tube length : 20 cm without "Y" site & 40 cm with "Y" site
- Tube dia : I Ø 3.0 mm, O Ø 4.1 mm

Anaesthesia & Respiratory Care

Endotracheal Tube (Plain/Cuffed)

- Made from non-toxic, clear, transparent, thermoresistant medical grade PVC (Polyvinyl Chloride).
- High volume, low pressure, evenly shaped cuff with a pilot balloon integrated to the tube for secure positioning inside the trachea
- Fitted with standard 15 mm connector for attachments to all standard ventilatory circuits in operation theaters or intensive care units.
- Graduated markings to display distance from the tip.
- Well marked to indicate the internal/external diameter.
- Nasoral tip suitable for both nasal and oral intubation.
- Full length radio-opaque lines to assess position of the tube radiographically.
- Murphy's eye near the tip to circumvent any obstruction.



Product Ref. No.					
Size	Plain	Cuffed	Size	Plain	Cuffed
2.0	A091000100	-	6.5	A091000109	A090000109
2.5	A091000101	-	7.0	A091000110	A090000110
3.0	A091000102	-	7.5	A091000111	A090000111
3.5	A091000103	A090000103	8.0	A091000112	A090000112
4.0	A091000104	A090000104	8.5	A091000113	A090000113
4.5	A091000105	A090000105	9.0	A091000114	A090000114
5.0	A091000106	A090000106	9.5	A091000115	A090000115
5.5	A091000107	A090000107	10.0	A091000116	A090000116
6.0	A091000108	A090000108			

Surgery & Drainage System

Yankauer Suction Set

- Moulded Yankauer suction handle with flexible kink resistant tube.
- Used for removal of secretions and blood peri-operatively by providing unobstructed suction during prolonged use.
- Soft flexible adaptors at both ends of the tube provide safe grip to the handle as well as suction source.
- Suitable for use with or without vent control facility.
- Vent port is closed with tight fit sleeve, which can be removed by small incision to shift to vent control system.
- Tube Length 250 cm (2.5 meter).
- Available in Standard Tip & Crown Tip.



Product Code :
S010000100 (Standard Tip)
S011000100 (Crown Tip)

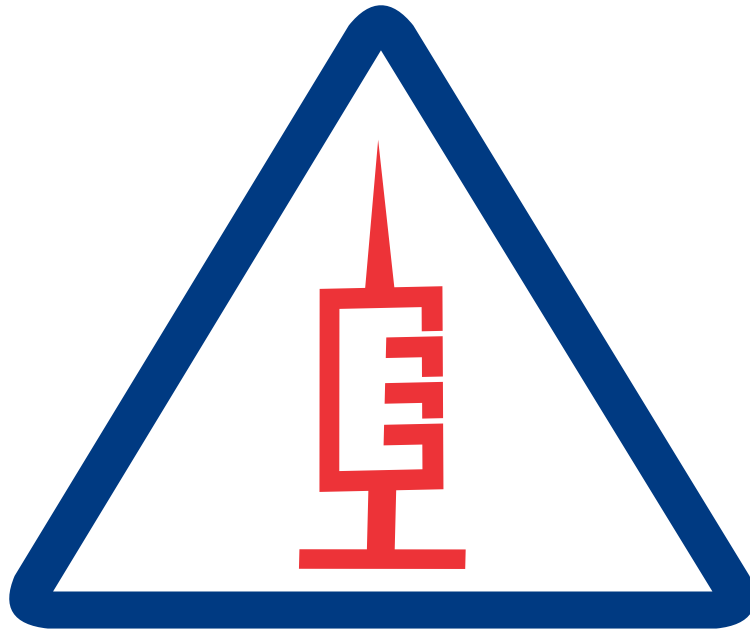
Urology

Foley Catheter

- Used for short/long term urine drainage
- Made up of latex bonded with silicone elastomer which eliminates the risk of encrustation
- Distal end is coned, smooth, and burr free eyes for a traumatic intubation.
- Provided with symmetrical large capacity balloon that ensures straight tip for proper urine flow and good sphincter action, preventing bladder leakage.
- High strength polymer layer in the middle of the catheter ensures wider inner diameter and hence high flow rate
- Smooth eye, ultra thin highly elastic balloon and hard non-return valve for trouble free inflation and deflation
- Valve is colour coded for instant size identification.



Specifications								
Type	Ch/FR	Colour	Outer Dia (mm) ±0.33mm	Capacity of balloon (ml)	Total Length (mm) Minimum	Flow Rate (ml/min.) Minimum	Product Ref. No.	
2-Way (Pediatrics)	6	Blue	2.0	1.5-3	220	10	U031030106	
	8	Black	2.7	3-5	220	15	U031030108	
	10	Grey	3.3		220	30	U031030110	
2-Way (Adult)	12	White	4.0	5-15	360	50	U031030112	
	14	Green	4.7	15-30	360	70	U031030114	
	16	Orange	5.3		360	100	U031030116	
	18	Red	6.0		360	100	U031030118	
	20	Yellow	6.7		360	100	U031030120	
	22	Purple	7.3		360	100	U031030122	
	24	Sky Blue	8.0		360	100	U031030124	
	26	Pink	8.7		360	100	U031030126	
	28	Brown	9.7		360	100	U031030128	
	30	Grey	10		360	100	U031030130	
	3-Way (Adult)	16	Orange		5.3	30-50	360	100
18		Red	6.0		360		100	U032030118
20		Yellow	6.7	360	100		U032030120	
22		Purple	7.3	360	100		U032030122	
24		Sky Blue	8.0	360	100		U032030124	
26		Pink	8.7	360	100		U032030126	
28		Brown	9.7	360	100		U032030128	
30		Grey	10	360	100		U032030130	



A SYSMECH - MAIS JOINT VENTURE

Mais India

The health care specialist

MAIS INDIA MEDICAL DEVICES PVT. LTD.

525 P, Sector-37, Pace City-II, Gurgaon-122001 (Haryana), India

Tel.: +91 124 404 7533

info@maisindia.com

Mob.: +91 8448822362

director@maisindia.in

www.maisindia.com